

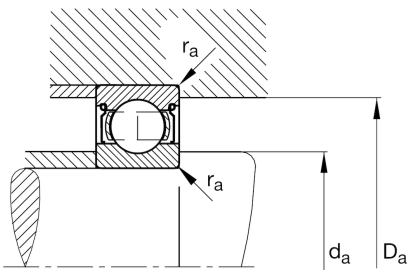
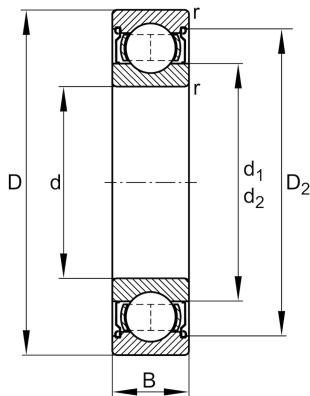
FAG

6008-2Z

Deep groove ball bearing

Schaeffler ID:
0167175460000Deep groove ball bearing 60...-2Z, single
row, shields, steel sheet metal cage

Technical information

**Main Dimensions & Performance Data**

d	40 mm	Bore diameter
D	68 mm	Outside diameter
B	15 mm	Width
C_r	17.800 N	Basic dynamic load rating, radial
C_{0r}	11.500 N	Basic static load rating, radial
C_{ur}	600 N	Fatigue load limit, radial
n_G	12.400 1/min	Limiting speed
n_{gr}	10.600 1/min	Reference speed
	0,189 kg	Weight

Dimensions

r_{min}	1 mm	Minimum chamfer dimension
D_2	61,6 mm	Caliber diameter outer ring
d_1	49,3 mm	Shoulder diameter inner ring

Mounting dimensions

d_{amin}	44,6 mm	Minimum diameter shaft shoulder
D_{amax}	63,4 mm	Maximum diameter of housing shoulder
r_{amax}	1 mm	Maximum fillet radius

Calculation factors

f_0	15,2	Calculation factor
-------	------	--------------------

Temperature range

T_{min}	-20 °C	Operating temperature min.
T_{max}	120 °C	Operating temperature max.